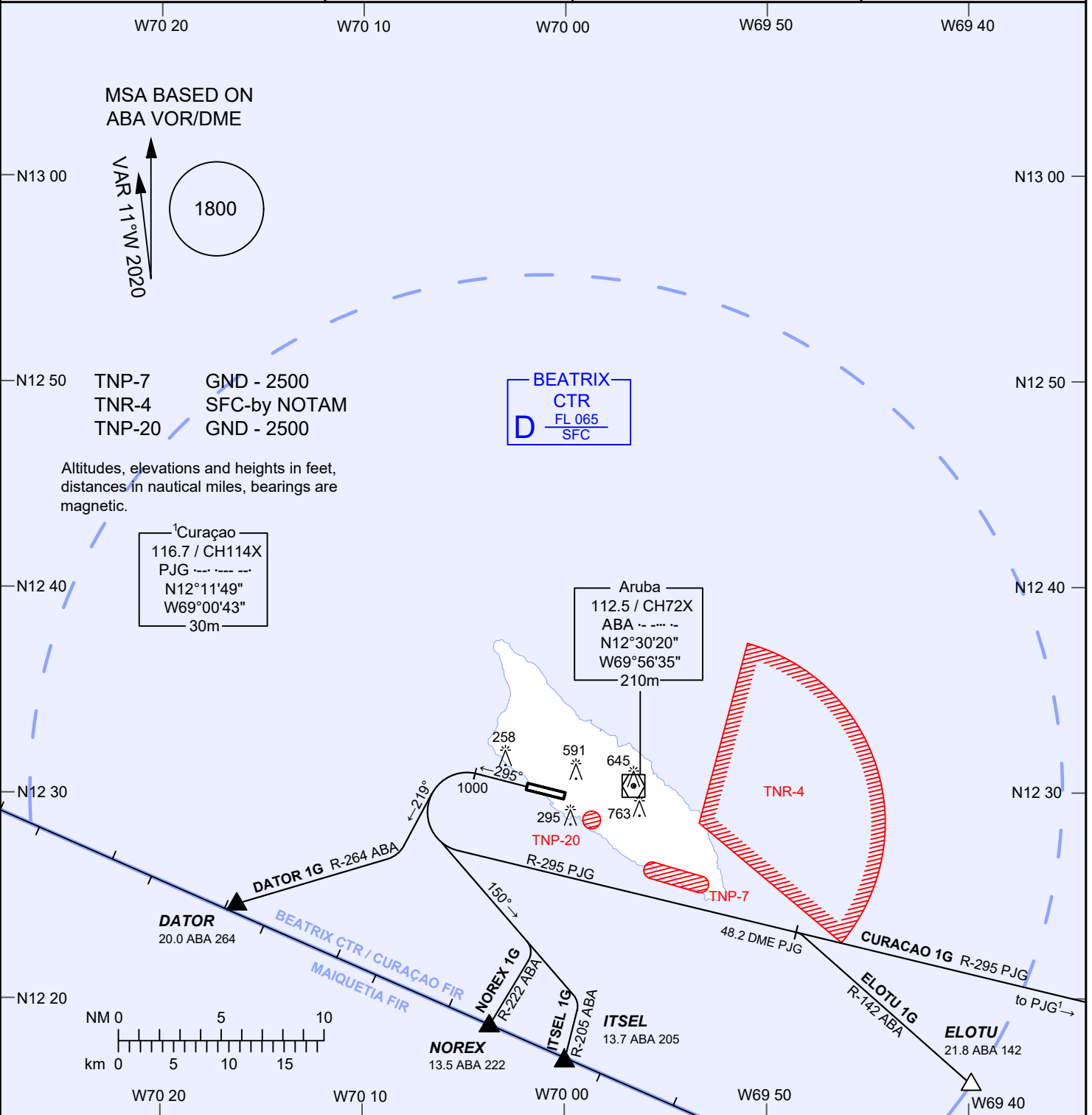


AIP DUTCH CARIBBEAN

STANDARD DEPARTURE CHART INSTRUMENT (VOR) - ICAO	AD ELEVATION: 62	BEATRIX:		RWY 29
	TRANS LEVEL: FL 040	TWR 118.0	APP 120.9	REINA BEATRIX INT'L
	TRANS ALT: 2500 (2438)	APRON 121.6	ATIS 132.1	(TNCA), ARUBA



CURACAO1G

Climb on runway magnetic track 295°, at or above 1000 ft AMSL turn left to intercept and follow R-295 PJK to PJK.

DATOR1G

Climb on runway magnetic track 295°, at or above 1000 ft AMSL turn left to magnetic track 219° to intercept and follow R-264 ABA to DATOR (20.0 DME ABA).

ELOTU1G

Climb on runway magnetic track 295°, at or above 1000 ft AMSL turn left to intercept and follow R-295 PJK up to 48.2 DME PJK. Turn right to intercept and follow R-142 ABA to ELOTU (21.8 DME ABA).

ITSEL1G

Climb on runway magnetic track 295°, at or above 1000 ft AMSL turn left to magnetic track 150° to intercept and follow R-205 ABA to ITSEL (13.7 DME ABA).

NOREX1G

Climb on runway magnetic track 295°, at or above 1000 ft AMSL turn left to magnetic track 150° to intercept and follow R-222 ABA to NOREX (13.5 DME ABA).

CHANGES: Editorial. MAGVAR2020.